

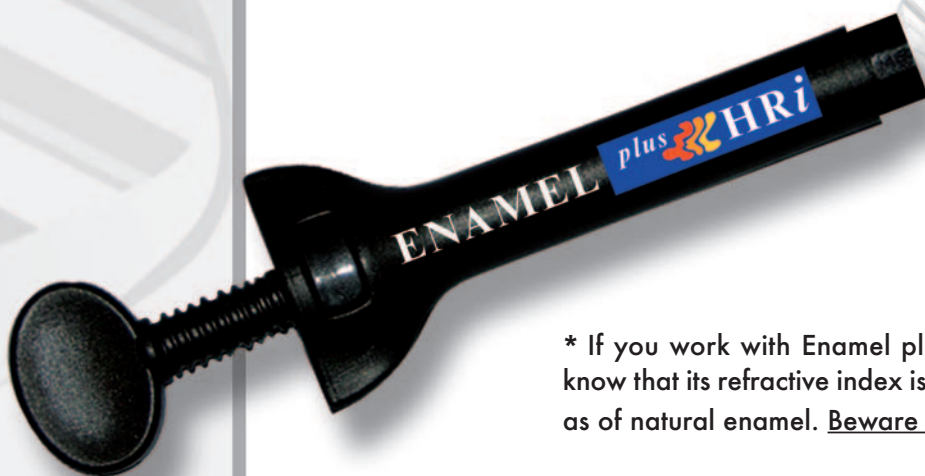
HRi

natural enamel C L O N E D in composite

a true dental innovation

1.62*

NATURAL TECHNOLOGY

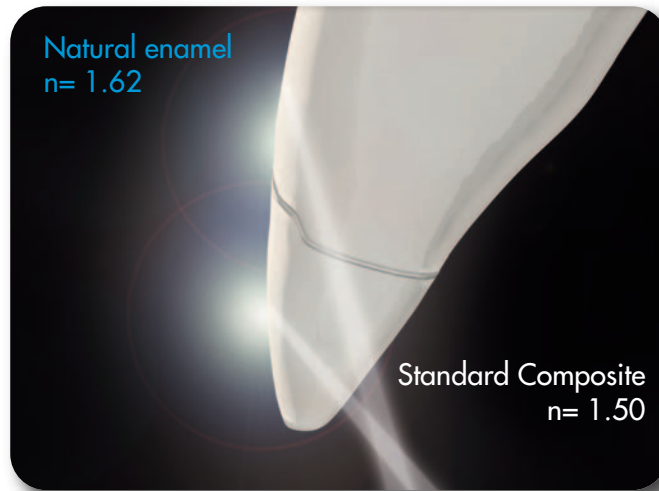


* If you work with Enamel plus HRi you will know that its refractive index is 1.62, the same as of natural enamel. Beware of imitations!

estetica
M[®]
GRUPPO
MICERIUM

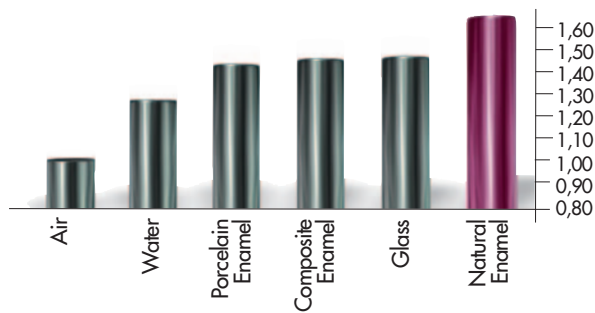
THE PROBLEM

The refraction of composite & ceramic materials...



"Glass Effect" lowers the value of the restoration with a gray halo on the margin (dark line)

RELATIVE REFRACTIVE INDEX OF LIGHT (n)



The relative refractive indexes of common materials measured at a temperature of 20°C and with a 589 nm wavelength light indicates the deviation and speed reduction of the light that crosses a translucent area (Vanini Mangani Klimovskaia "Conservative Restoration of Anterior Teeth" Acme 2005)

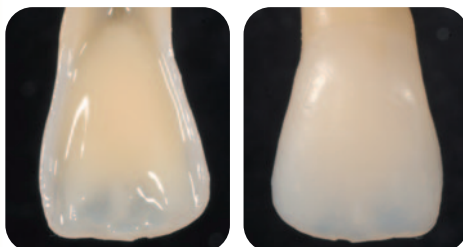
HRi: THE TRUE ENAMEL



HRi Enamel veneers showing natural effects

Different thicknesses of Enamel plus HRi change in shade in the same manner as Natural Enamel would in the same thickness.

Thickness of 0,6 mm allows ideal translucency



Application of dentine and opalescent OBN



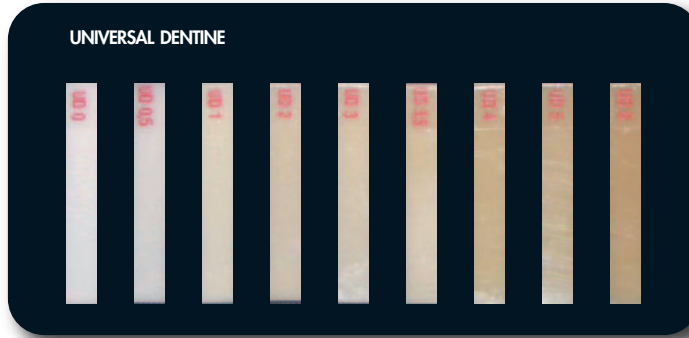
UE1 low value (amber)

UE2 medium value

UE3 high value (for children or bleached teeth)

THE CHARACTERISTICS Technological Advantages

TECHNOLOGICAL & OPERATING ADVANTAGES



DENTINE

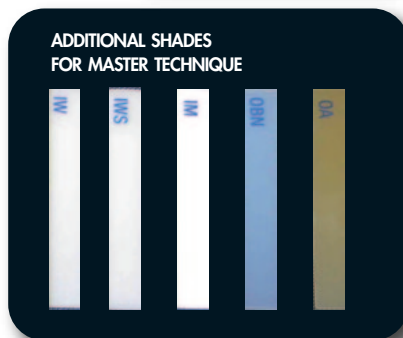
- **New dentine** with fluorescence and increased translucency calibrated to natural dentine
- **Ultra-light Dentine:** UD0 and UD 0,5 for bleached teeth



UNIVERSAL ENAMEL

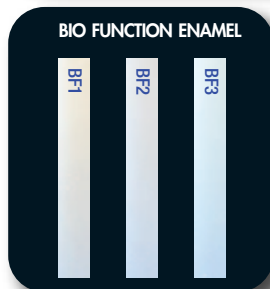
Universal enamel (low, medium and high value)

- **Invisible margin thanks to high refraction index** no "glass effect" lowering the value of the restoration
- **Opalescent effect blue and amber created from HRi Enamel** (Transparency 30% until 0,8 mm)



ADDITIONAL SHADE

- **Characterization and intensive effect** created by intensive enamel (IM, IWS, IW) and opalescent amber (OA)
- **Opalescent blue effect** enhanced by Opalescent OBN



BIO FUNCTION ENAMEL

Bio Function: very high biocompatibility*

- **Low abrasion** ideal for posteriors but excellent also for anteriors

* The new highly biocompatible BIS-GMA-free Bio Function formula is also available in dentine colours: BDO BD6



- **Physical data Bio Function enamel**
 - Wear (depth) 0,212 mm*
 - Compressive strength 460 MPa
 - Vickers Hardness 685 MPa
 - Flexural Strength 150 MPa
 - Modulus of elasticity 11.600 MPa
- * (natural enamel wear 0,216 mm)



THE CLINICAL CASES

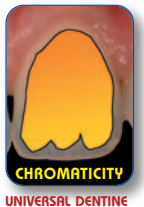
by Dr. Lorenzo Vanini

Operating advantages: simple technique

JUST ENAMEL TECHNIQUE USING ENAMEL PLUS HRi UNIVERSAL ENAMEL



BASIC TECHNIQUE USING ENAMEL PLUS HRi, DENTINE AND ENAMEL



CLASS III RESTORATION USING ENAMEL PLUS HRI, DENTINE AND UNIVERSAL ENAMEL



POSTERIOR DIRECT & INDIRECT



THE CLINICAL CASES

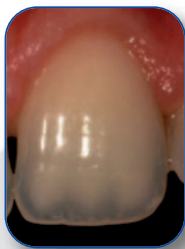
by Dr. Lorenzo Vanini

Operating advantages: complex restorations

MASTER TECHNIQUE ADDITIONAL SHADES FOR OPALESCENCE, INTENSIVE AND CHARACTERIZATION



5 DIMENSIONS OF COLOUR BY DR. LORENZO VANINI



CHROMATICITY

HUE AND CHROMA
OF THE DENTINE BODY
**UNIVERSAL
DENTINE**



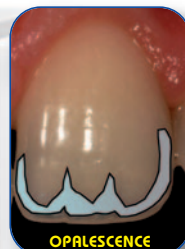
VALUE

LUMINOSITY DEGREE
(BLACK-WHITE)
**UNIVERSAL
ENAMEL**



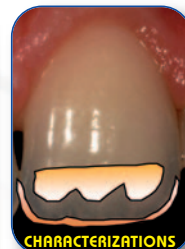
INTENSIVE

WHITE SPOTS OR LINES
INSIDE ENAMEL
IW / IWS / IM



OPALESCENCE

BLUE HUE
CREATE THE INCISAL HALO
**UNIVERSAL ENAMEL
/ OBN**



CHARACTERIZATIONS

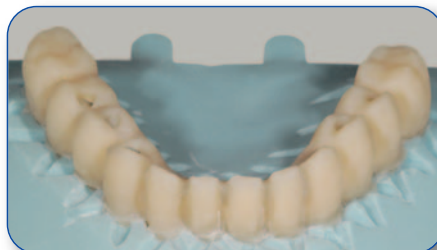
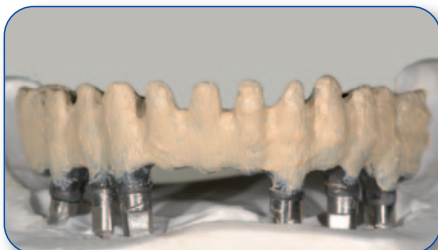
WHITE-AMBER
ON MAMELONS AND
INCISAL MARGIN
IW / IWS / OA



PROSTHESIS ON IMPLANTS



PRESSING TECHNIQUE WITH TENDER FLASK Laboratory case by Mr. D. Rondoni



The product



ENAMEL PLUS HRi KIT



CHR15

**COMPLETE KIT
ENAMEL PLUS HRi
FOR MASTER TECHNIQUE**

including 15 syringes 5 g
with syringe holder

9 universal dentine:

UD0, UD0,5, UD1 (A1),
UD2 (A2), UD3 (A3),
UD3,5 (A3,5), UD4 (A4),
UD5, UD6

3 universal enamel:

UE1, UE2, UE3

3 intensive enamel:

white (IW), white spot
(IWS), milky (IM)

2 opalescent enamel

(2,5g)
blue (OBN), amber (OA)
available separately
(included in special offers)



All kits available
also in tips



CHR11

**INTRO KIT
ENAMEL PLUS HRi
FOR MASTER TECHNIQUE**

including 11 syringes 5 g
with syringe holder

7 universal dentine:

UD0, UD1 (A1),
UD2 (A2), UD3 (A3),
UD4 (A4), UD5, UD6

3 universal enamel:

UE1, UE2, UE3

1 intensive enamel:

intensive white spot (IWS)



CR3FB

**ENAMEL KIT
ENAMEL PLUS HRi BIO FUNCTION**

including 3 syringes 2,5 g
3 "Bio Function" enamel:
BF1, BF2, BF3



CHR6*

**TRIAL KIT
ENAMEL PLUS HRi
FOR BASIC TECHNIQUE**

including 6 syringes 2,5 g
with syringe holder

4 universal dentine:

UD1 (A1), UD2 (A2), UD3
(A3), UD4 (A4)

2 universal enamel:

UE2, UE3

***CHR6FB**

BF2 instead of UE3

**INTRODUCTORY KIT ENAMEL PLUS HRi TENDER
FOR LABORATORY**

including:

- 3 Tender 2,5g: T2, T3, T4
- 5 Dentine HRi 2,5g: UD1 (A1), UD2 (A2),
UD3 (A3), UD4 (A4), UD5
- 1 Universal enamel HRi 2,5g: UE2
- 3 Bio Function enamel 2,5g: BF1, BF2, BF3
- 1 Intensive enamel 2,5g: Intensive White Spot (IWS)
- 1 Opalescent enamel 2,5g: OBN
- 2 Paste opaque 3g: light, clear
- 1 Tender bond metal primer 5ml



TENDER 1H

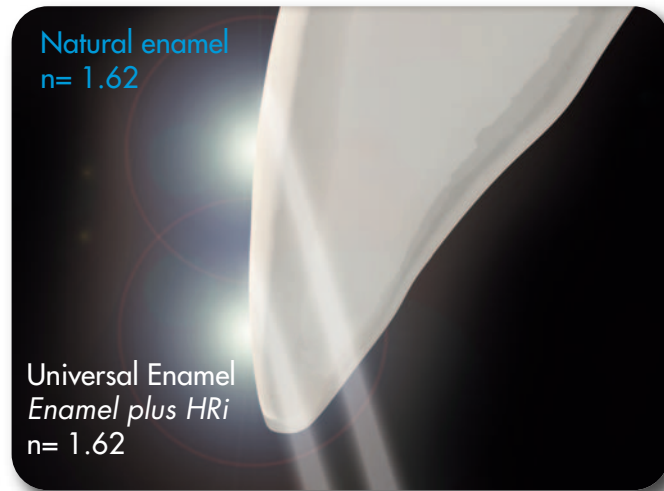


**TENDER FLASK
for pressing
technique**
available
separately

THE SOLUTION

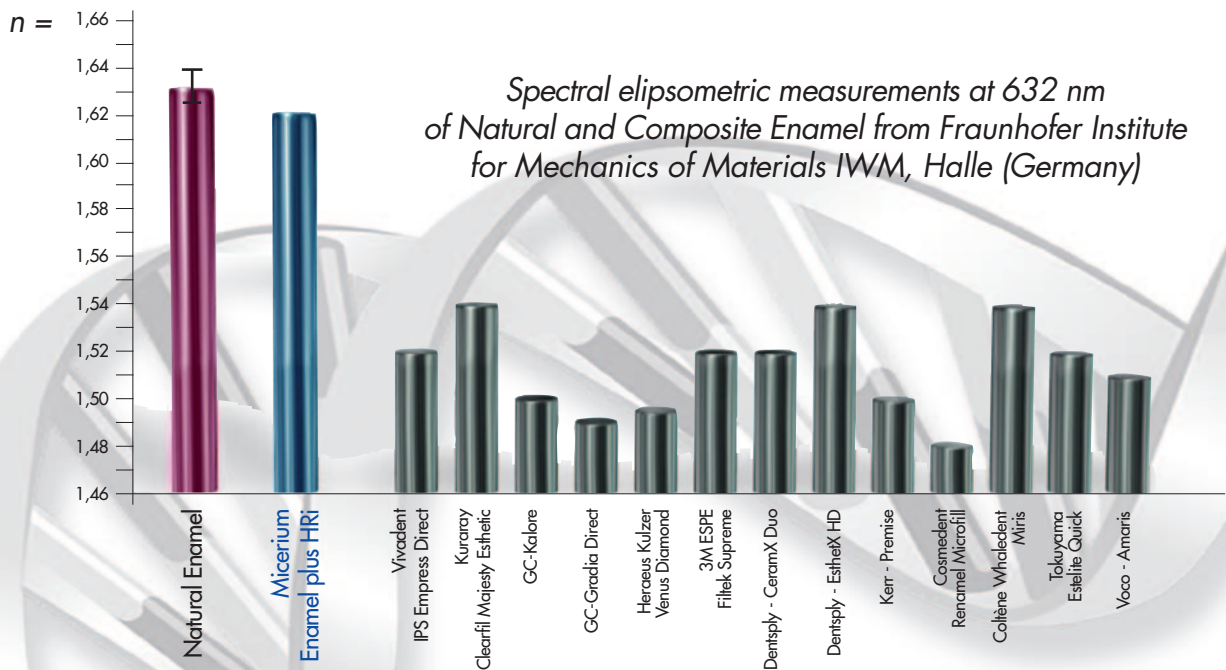
ENAMEL^{plus} HRi

... the same refractive index as natural enamel

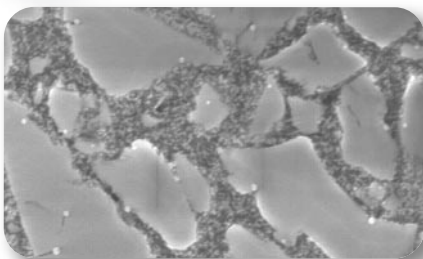


Invisible margins, in HRi restoration, using the same thickness of the natural enamel

RELATIVE REFRACTIVE INDEX



NANOTECHNOLOGY REM



Enamel plus HRi doesn't contain TEGDMA and HEMA!

- **Composition FILLING (80% WEIGHT - 63% VOLUME)**
 - Surface treated zirconium oxide with high refractive index (12% in weight)
 - New type of filling glass with high refractive index (68% in weight)
- **Ideal physical data** for every type of direct or indirect restoration

- Vickers Hardness	700 MPa
- Modulus of elasticity	14.500 MPa
- Flexural Strength	170 MPa
- Compressive strength	450 MPa
- High radiopacity	600% Al



The HRi project has been devised from Dr. L.Vanini and developed in collaboration with Dr. T. Niem (Patent Pending)

This project (HA-Project-Nr: 130/07-01) has received special funding from the State of Hessen, co-financed by funds of the European Union (European Social Fund - ESF) for scientific innovation and advancement.



ENAMEL PLUS SHINY FINISHING SYSTEM



Finishing and polishing with diamond rubber point, diamond paste 3µ and 1µ with brushes, aluminium oxide with felt.

ENAMEL PLUS HRi FLOW^{HF} - ENA CEM^{HF}



New highly filled fluid composite medium viscosity, available dual as Ena Cem^{HF} (for multipurpose luting & core build up) and light curing as Flow^{HF} HRi (as liner). High physical properties and without bubbles.



ENA POST 10% & 2% GLASS FIBER POST



Aesthetic: fluorescent and dentine colour
 Functional: same elasticity of dentine
 Perfectly integrated with the tooth, cement and restorative material: the only post with silanized fibers embedded in the same resin of restorative material (Enamel plus HRi)

ENAMEL PLUS TEMP



Temporary Resin for aesthetic temporary crown and bridge

The opacity and fluorescence of the dentine bodies, combined with the natural translucency of the enamel allows Enamel plus Temp a harmonious relationship which perfectly matches the relationship of these layers within the natural tooth.

TENDER PINK



Pink Composite is the most innovative system to reproduce the gingival tissue in dental office and laboratory.
4 shades: Dark, Light, Orange, Transparent
1 Flow Pink and **1 Opaque Pink**
3 Stain Flow: Blue, White and Red

ENA HEAT



Composite Heating conditioner

ENA HEAT 1 10-240V
 50-60 Hz, 500mA

Allows to use composite at the ideal temperature of 39°C for modellation and 55°C for cementation. Usable to heat hypochlorite and anaesthetic too.

